



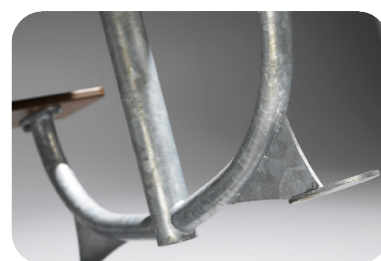
Street furniture technical specifications

"ELLIPSON" range

Picnic Table



JEL-0137



JEL-0137

ELLIPSON range:

This range is recognisable by its original lines and harmonious combination of brushed stainless steel and wood. "ELLIPSON" certainly has character!

+ Ideas: In addition to hardwood, "Ellipson" also uses high-pressure laminate (HPL). Brushed stainless steel, passivated after manufacture is also a trademark of the "Ellipson" range. Elegant, durable and easy-maintenance, it is extremely low-cost over the years.

+ Design: "Ellipson" is also distinguished by its modular seats and easily adapts to the requirements of the environment in which it set.

+ Quality: The "Ellipson" range is available with a universal sealing system. Entirely modular, it is fully compatible with all of the range's references.

Identification:

Catalogue	Street furniture
Range	Ellipson
Pages	40

Dimensional characteristics:

Equipment dimensions (LxWxH)	2000x1400x740 mm
Seat length	2000 mm
Seat height	440 mm
Table height	740 mm
Number of places	8
Weight	119 Kg

Material:

Base	Galvanised, painted steel
Seat	HPL
Platform	HPL

Standard:

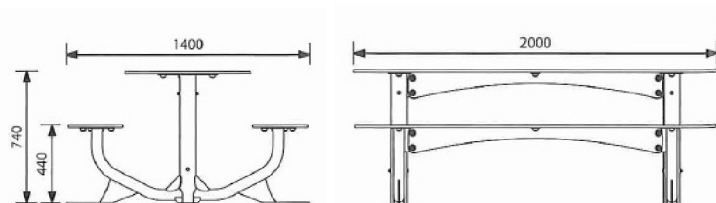
NF EN 335-1	NOT APPLICABLE
NF P 99-610	Yes

Installation:

Delivery	Kit
Fixing type	Foundation bolts/pins

Colour:

Standard base colour *	Hot-dip galvanised steel
Standard seat and table colours	Brown





Street furniture



+ STEEL

Extremely resistant double coating

All our steel sections feature double-surface coating:

- Treatment 1: hot-dip galvanisation after manufacture (on the inside and outside of the tubes)
- Treatment 2: powder coating (oven-cured powder paint)

This double treatment guarantees optimum protection from corrosion.



+ IRON OR ALUMINIUM CASTING

Efficient method

After being removed from the mould, the cast iron or aluminium parts are stripped, sand-blasted and then coated in oven-cured polyester powder at a temperature of 250°C to form a uniform, protective coat of approximately 100 microns.



+ ASSEMBLY

Stainless steel bolts and screws

For the metal assemblies, we systematically use our special vandal-resistant bolts which cannot be unscrewed without a special HUSSON tool.

For the wooden/metal assemblies, we have also developed a special vandal-resistant stainless steel screw.



+ GUARANTEE

Long-term guarantee

Thanks to the quality of the materials used and to our double surface treatment, our furniture is designed to withstand the harshest climates and vandalism, thus guaranteeing the sustainability of investments.



+ WOOD AND POLYMERS

Many possibilities to meet every requirement

- **Tropical hardwood** ("ironwood"): We have chosen an extremely tough tropical hardwood ("ironwood") for its exceptional resistance and attractive appearance. As part of its sustainable development approach, HUSSON International is committed to using wood harvested from forests which are managed in an environmentally responsible manner.
- **Softwood**: Cheaper than hardwood, the softwood selected by HUSSON International has a very attractive appearance and is the number one choice.
- **Recycled materials**: As part of its sustainable development approach, HUSSON International uses recycled materials for its bench slats and litter bins. The selected materials are extremely stain- and scratch-resistant and reduce maintenance to a bare minimum ==> See "WoodTech" technical specification sheet.
- **HPL** (High Pressure Laminate): Extremely tough and wear-resistant, flame-retardant, volume-dyed, easy maintenance, high pressure laminate. Available with a wooden texture for a beautiful effect.
- **Rotation moulded polymers**: The planter and litter bin tubs and some of the street furniture items are made of polymers, generally HDPE (High Density Polyethylene) or PP (Polypropylene). Rotation moulding technology is used to create mechanically-resistant, volume dyed products with complex shapes.



+ WOOD SURFACE TREATMENT

Environmentally-friendly treatment

(For softwood and hardwood)

To improve the long-term durability of the surface coating, and to facilitate their maintenance, we use a vacuum and pressure surface-coating treatment which enables excellent penetration into the wood.

Results:

- Clearly improved durability
- Extremely easy maintenance
- Environmentally-friendly, solvent-free treatment which is safe for users