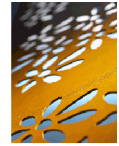




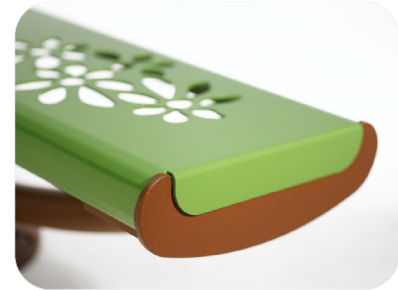
Street furniture technical specifications

"STEEL & STYLE" range

Small Bench Biarritz Flowers



JAN-0012



STEEL & STYLE range:

The STEEL & STYLE range has two finishes: Flowers and Iron. Thanks to their orangey-brown colours, the Flowers furniture blends easily into many environments. Alternatively, the Iron motif is an eternal best seller in the street furniture range.

+ Ideas: The furniture from the new "Steel & Style" range is made entirely of steel, a material which is more contemporary than ever: durable, fully recyclable and suitable for all kinds of creative designs.

+ Design: The light and airy design is achieved by mastery of 2D and 3D laser-cutting technologies and skilful bending techniques, producing perfectly executed results.

+ Quality: The finish consists of HUSSON International's famous double surface coating which guarantees extremely easy and cost-effective maintenance.



JAN-0012

Identification:

Catalogue	Street furniture
Range	Steel & Style
Pages	25

Dimensional characteristics:

Equipment dimensions (LxWxH)	1680x460x440 mm
Seat length	1680 mm
Seat height	440 mm
Number of places	3
Weight	53 Kg

Material:

Base	Galvanised, painted steel
Seat	Galvanised, painted steel
Back	Galvanised, painted steel

Standard:

NF EN 335-1	NOT APPLICABLE
NF P 99-610	Yes

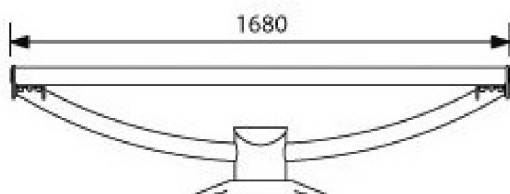
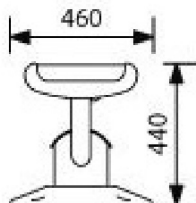
Installation:

Delivery	Kit
Fixing type	Foundation bolts/pins

Colour:

Standard base colour *	Azko Futura "Mars" brown
Standard seat and back colour *	Green RAL 6025

* more than 200 shades available on request





Street furniture



+ STEEL

Extremely resistant double coating

All our steel sections feature double-surface coating:

- Treatment 1: hot-dip galvanisation after manufacture (on the inside and outside of the tubes)
- Treatment 2: powder coating (oven-cured powder paint)

This double treatment guarantees optimum protection from corrosion.



+ IRON OR ALUMINIUM CASTING

Efficient method

After being removed from the mould, the cast iron or aluminium parts are stripped, sand-blasted and then coated in oven-cured polyester powder at a temperature of 250°C to form a uniform, protective coat of approximately 100 microns.



+ ASSEMBLY

Stainless steel bolts and screws

For the metal assemblies, we systematically use our special vandal-resistant bolts which cannot be unscrewed without a special HUSSON tool.

For the wooden/metal assemblies, we have also developed a special vandal-resistant stainless steel screw.



+ GUARANTEE

Long-term guarantee

Thanks to the quality of the materials used and to our double surface treatment, our furniture is designed to withstand the harshest climates and vandalism, thus guaranteeing the sustainability of investments.



+ WOOD AND POLYMERS

Many possibilities to meet every requirement

- **Tropical hardwood** ("ironwood"): We have chosen an extremely tough tropical hardwood ("ironwood") for its exceptional resistance and attractive appearance. As part of its sustainable development approach, HUSSON International is committed to using wood harvested from forests which are managed in an environmentally responsible manner.
- **Softwood**: Cheaper than hardwood, the softwood selected by HUSSON International has a very attractive appearance and is the number one choice.
- **Recycled materials**: As part of its sustainable development approach, HUSSON International uses recycled materials for its bench slats and litter bins. The selected materials are extremely stain- and scratch-resistant and reduce maintenance to a bare minimum ==> See "WoodTech" technical specification sheet.
- **HPL** (High Pressure Laminate): Extremely tough and wear-resistant, flame-retardant, volume-dyed, easy maintenance, high pressure laminate. Available with a wooden texture for a beautiful effect.
- **Rotation moulded polymers**: The planter and litter bin tubs and some of the street furniture items are made of polymers, generally HDPE (High Density Polyethylene) or PP (Polypropylene). Rotation moulding technology is used to create mechanically-resistant, volume dyed products with complex shapes.



+ WOOD SURFACE TREATMENT

Environmentally-friendly treatment

(For softwood and hardwood)

To improve the long-term durability of the surface coating, and to facilitate their maintenance, we use a vacuum and pressure surface-coating treatment which enables excellent penetration into the wood.

Results:

- Clearly improved durability
- Extremely easy maintenance
- Environmentally-friendly, solvent-free treatment which is safe for users